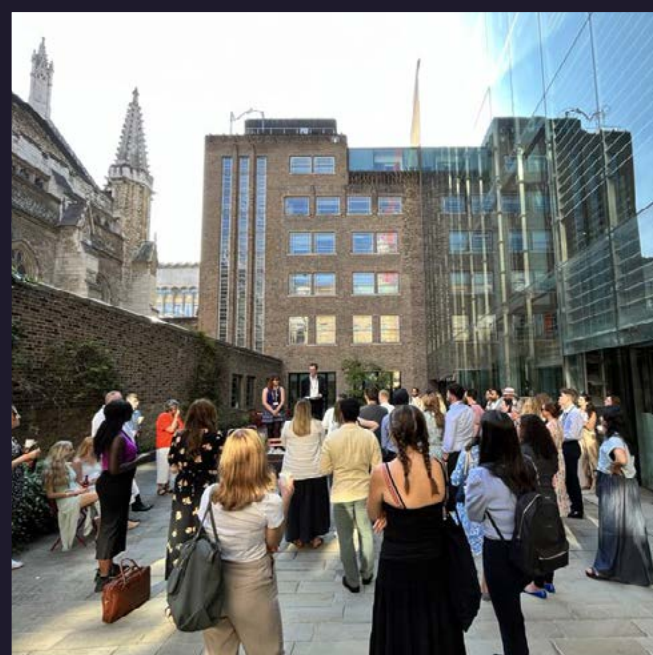




# Our Impact and Key Facts

**Our Corporate  
Plan 2024–2029**



# Contents

<b>Our impact and key facts</b>	<b>04</b>
Our people	05
Our remit	06
Sustainability and natural environment	08
Culture and heritage	10
Our community	12
Education and lifelong learning	14
Economic contributions and assets	16
Our responsibilities in the Square Mile	18
Our responsibilities outside the Square Mile	20

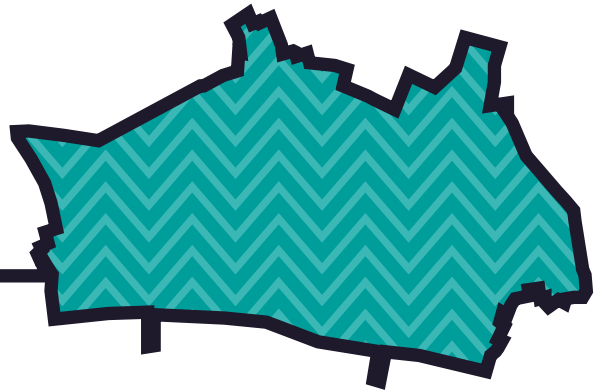


# **Our impact and key facts**

# Our people



There are  
**8,600**  
residents living in  
the City of London.



## 10 million

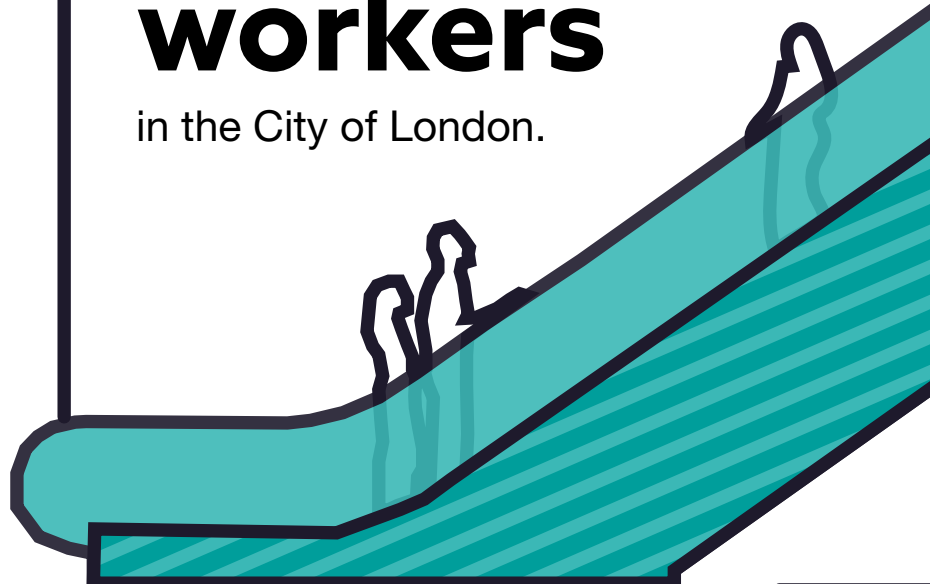
people visit the  
Square Mile each year.



There are  
**614,500**  
**workers**  
in the City of London.

## 1 in 52

UK workers are  
employed in the City.



# Our remit



We are the London Port Health Authority for the tidal River Thames, patrolling 94 miles of Britain's busiest waterway from Teddington to the outer Thames Estuary.

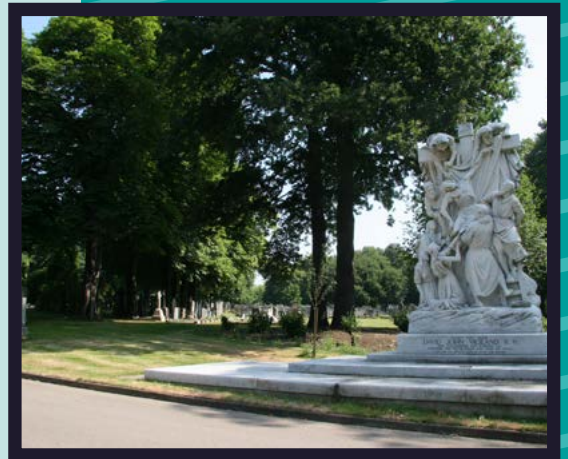


We operate three pre-eminent wholesale food markets (Smithfield meat market, Billingsgate fish market, New Spitalfields fruit and vegetable market), providing a vital link in the food supply chain for London and the South of England. The markets move 1 million tonnes of produce every year, contribute around £590 million in gross value added (GVA) to the UK economy, and support 10,250 jobs directly and through the associated supply chain.



We manage the Heathrow Animal Reception Centre, and our staff look after around 14,000 dogs and cats, 400 horses, 150,000 reptiles, 1,000 birds and 25 million fish that are imported through Heathrow Airport each year. We are also the Animal Health Authority for Greater London, and we undertake animal establishment licensing for other local authorities.

Since 1856, we have operated the City of London Cemetery and Crematorium, a stunning 200-acre Grade 1 listed landscape and one of the largest municipal cemeteries in Europe.



The City of London Police is a local service with a national role. It polices a unique local area and is also the National Lead Force for Fraud, and the National Police Chiefs' Council (NPCC) lead for economic, cyber-crime and business crime. As such, it has responsibilities to keep both the City and the UK safe from crime.



We are a committed charity trustee of the City Bridge Foundation and our Natural Environment charities.

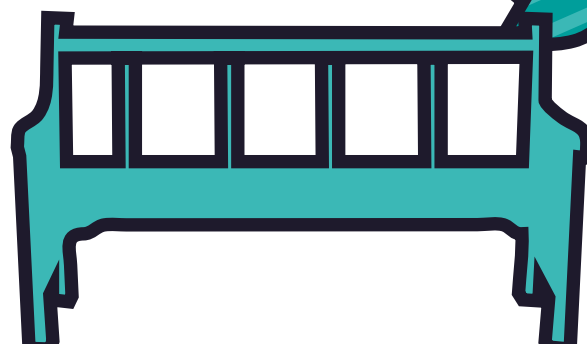
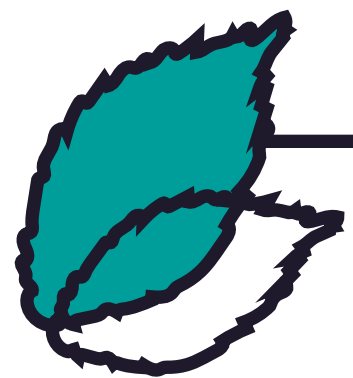


# Sustainability and natural environment

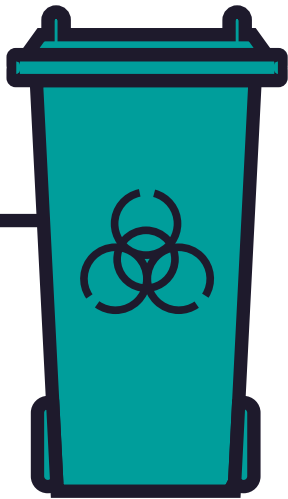
We look after **11,000 acres** of natural habitats in London and the Home Counties, which is approximately the same size as 20 Hyde Parks. These remove an estimated **16,000 tonnes** of CO<sub>2</sub> per year, equivalent to 44% of the City Corporation's carbon footprint.

The estimated value of the benefits delivered by the natural capital assets quantified across the open spaces portfolio is **£86.7 million annually**, with a present value of **£2.5 billion over 50 years**.

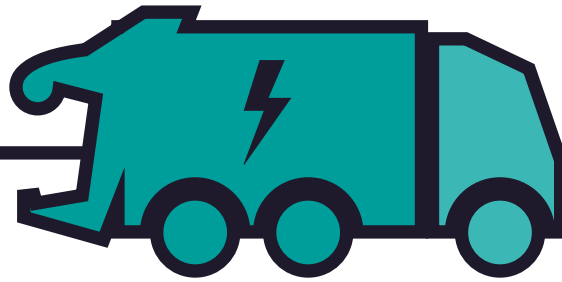
Our green spaces are home to more than **58,000 ancient trees** and hundreds of endangered species. They receive **over 47 million visits** annually.







The City is lead authority for hazardous waste collection across London, arranging for around **5,600 collections** of asbestos and chemical waste from the public sector, schools and charities.



Our cleansing service provides waste and recycling collections for **7,000 residential properties**, using the first fully electric fleet of refuse collection vehicles in the country.



Walbrook Wharf waste transfer station handles around **50,000 tonnes** of general waste a year. The majority is from commercial premises with 2,500 tonnes from household and street cleansing.

Waste is transported down-river in barges powered by biofuel to an energy-from-waste facility. This **saves 5,500 vehicle movements** a year, reducing air and noise pollution and road traffic congestion, and re-emphasises City Corporation's commitment to the revival of the River Thames as a green highway for London.



# Culture and heritage

- We are one of the Country's largest funders of culture, investing £130 million every year in heritage and cultural activities.
- Guildhall School of Music and Drama is ranked number one out of 12 in arts, drama and music by the Complete University Guide 2023.
- The Guildhall Art Gallery displays more than 250 portraits, paintings and sculptures and is free of charge to visit.
- We run London's archive service, collecting, preserving, sharing and celebrating the stories of London and Londoners with local, national and international audiences. We safeguard over 100km of records on businesses, schools, hospitals, charities, and many other organisations and people from London.



- The Barbican Centre holds thousands of events for the public each year and opens its doors for approximately 1.5 million visitors annually.
- We manage, maintain and conserve 877 heritage assets, including scheduled monuments, listed buildings, historic open spaces, churchyards and cemeteries, ceremonial furnishings, and historic carriages.
- Our natural environment provides a wide range of access and recreation opportunities, including miles of walking and cycling trails, open water swimming facilities, golf, tennis, football, rugby, bowls, and numerous play areas. It is also rich in cultural heritage, including two museums, a visitor centre, ancient hill forts and a wide range of other archaeological features.

# Our community



We provide over

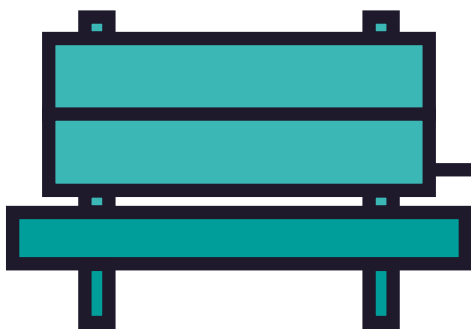
**1,800**

social housing units on 12 estates across six London Boroughs and the City.

We are the strategic housing authority for the City of London and a landlord responsible for over

**1,900**

social tenanted properties and over 950 leaseholder properties across London.



Our open spaces provide a unique learning place for

**38,000**

people from schools, colleges and youth groups.



Our children's social care services are rated

**'outstanding'**

by Ofsted.



Passionate and proud volunteers help our natural environments thrive giving over

**20,000**

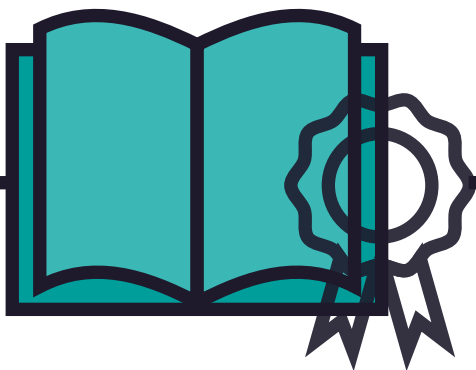
volunteer hours a year.



Volunteer groups play an active role in helping us manage our City Gardens – approximately

**180 sites**

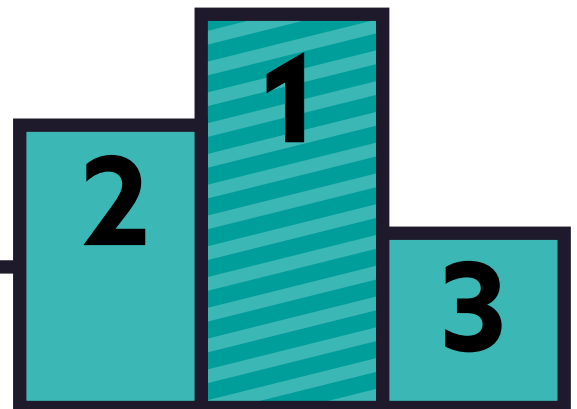
throughout the City and beyond – contributing around 4,500 volunteer hours each year.



Three community libraries – including the award-winning Barbican Music Library – attract

**288,000**

visits annually.



Our care-related quality of life score for adults is

**ranked first**

within peer group and of 150 councils.

# Education and lifelong learning





- Five out of ten of our City of London Academies Trust schools hold an ‘outstanding’ Ofsted rating, and two are rated ‘good’ with ‘outstanding features’.
- City of London School for Girls was the top performing independent school for GCSE results in 2022 and 2023.
- The City of London Freemen’s School is consistently placed among the top five co-educational boarding schools in the UK based on A-Level outcomes.
- The City of London School is ranked as ‘excellent’ by the Independent Schools’ Inspectorate for both quality of pupils’ academic and other achievements, and for quality of pupils’ personal development.
- In 2023, we took on seventy apprentices across City Corporation and partner organisations.

# Economic contributions and assets

City jobs have grown over 13% since pre-pandemic 2019 to 2022, with nearly **73,000** more jobs than in 2019.



The Salisbury Square development is creating a new civic hub, including a headquarters for the City of London Police and a new modern facility for HM Courts and Tribunals Service in the heart of London's legal centre, creating **45,785** square metres of space.

Relocating the Museum of London will enable more visitors from London and around the world. This will create a world-class learning experience capable of hosting blockbuster exhibitions and events in **26,769** square metres of space.







The City accounts for

**1 in every 5**

financial services jobs in Great Britain.

We manage around 400 revenue projects with a value of more than **£30 million**.

The City generates nearly **£85 billion** in economic outputs annually, supporting the UK economy.

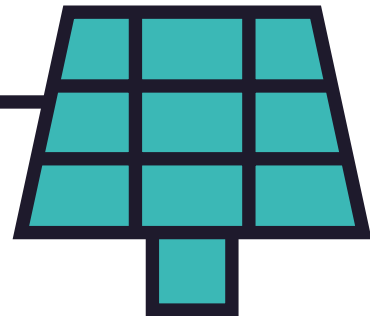
25% of City Corporation new entrant apprenticeship opportunities funded by **£1.4 million** ringfenced for residents of local and neighbouring authorities aged 18 to 24 from disadvantaged backgrounds. A similar programme is being piloted for those aged 16 to 18.

The City also contributes to services across the UK, generating **£1.1 billion** in business rates alone.

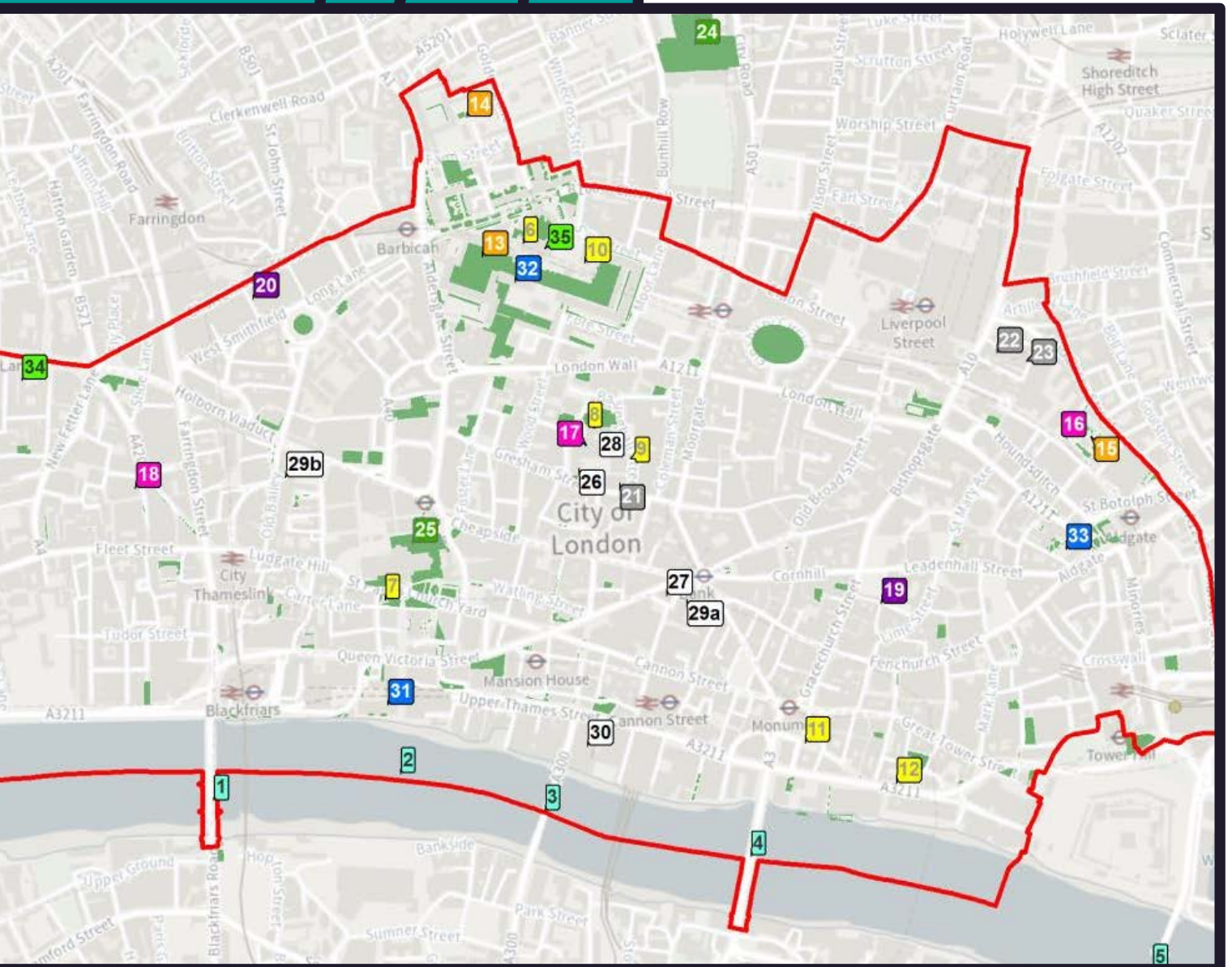
Property fund management focuses on maximising rental income and long-term performance for City Fund and City Estates assets, which total approximately

**£3 billion** in value across 250 properties. Portfolio performance exceeds the industry benchmark (MSCI total returns) over a 5, 10 and 28 year time frame.

A solar farm in Dorset constructed through a power purchase agreement (PPA) has reduced energy costs for the City Corporation by **£20 million** per annum. It is the first of its kind in the UK within the public sector.



# Our responsibilities in the Square Mile



# Key



Blackfriars Bridge **1**  
Millennium Bridge **2**  
Southwark Bridge **3**  
London Bridge **4**  
Tower Bridge **5**



Barbican Library **6**  
Barbican Arts Centre **6**  
City of London Information Centre **7**  
City of London Police Museum **8**  
Guildhall Art Gallery and Roman Amphitheatre **9**  
Guildhall School of Music and Drama **10**  
The Monument **11**  
Billingsgate Roman House & Baths **12**



Barbican Estate **13**  
Golden Lane Estate **14**  
Middlesex Street Estate **15**



Artizan Street Library **16**  
Small Business Research and Enterprise Centre (SBREC) **17**  
Shoe Lane Library **18**



Leadenhall Market **19**  
Smithfield Market **20**



City of London Police Headquarters **21**  
Bishopsgate Station **22**  
City of London Police (Support services and operational functionality) **23**



Bunhill Fields **24**  
City Gardens (all green areas) **25**



City Bridge Foundation **26**  
City of London Magistrates Court **27**  
Guildhall **28**  
Mansion House - Office & Home of the Lord Mayor of the CoL **29**  
Central Criminal Court (The Old Bailey) - Office & Home of the Sheriffs of the CoL **29**  
Walbrook Wharf **30**

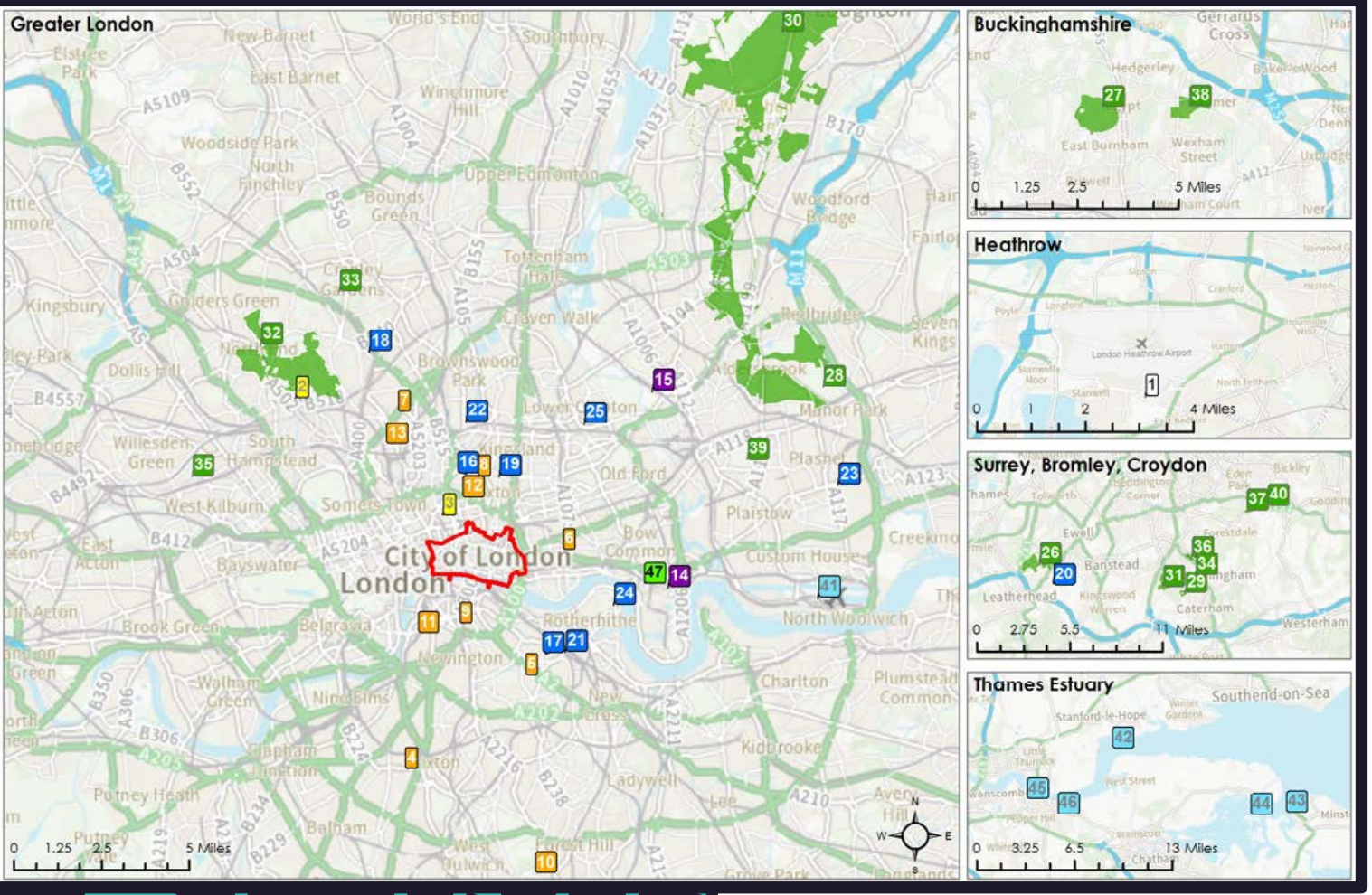


City of London School **31**  
City of London School for Girl **32**  
The Aldgate School **33**



Gresham College **34**  
London Symphony Orchestra **35**

# Our responsibilities outside the Square Mile



## Key



Heathrow Animal Reception Centre **1**  
Keats House **2**  
London Metropolitan Archives **3**



Almshouses **4**  
Avondale Square **5**  
Dron House **6**  
Holloway Estate **7**  
Isleden House **8**  
Southwark Estates **9**  
Sydenham Hill Estate **10**  
William Blake Estate **11**  
Windsor House Estate **12**



York Way Estate **13**  
Billingsgate Market **14**  
New Spitalfields Market **15**



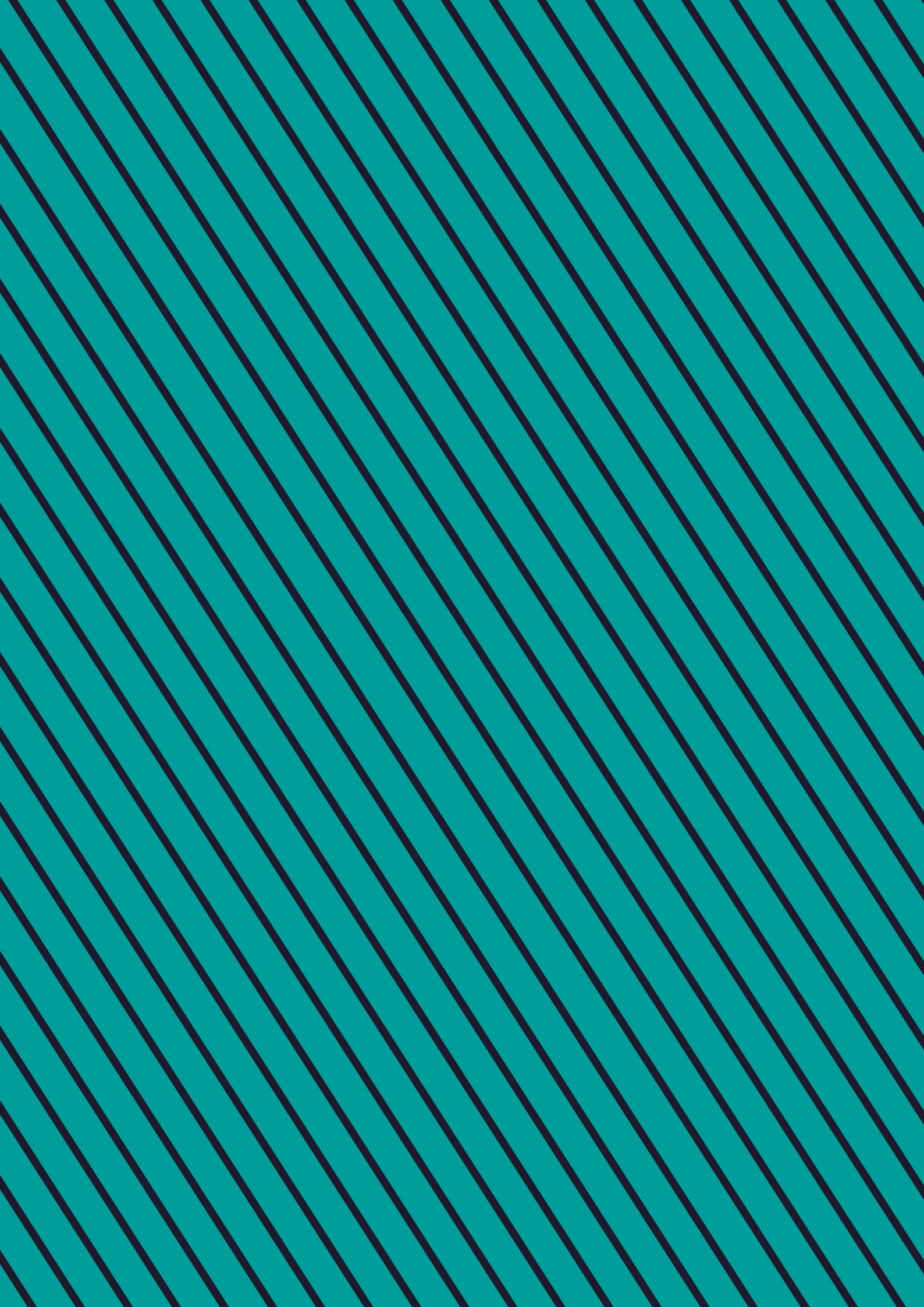
City of London Academy Islington **16**  
City of London Academy Southwark **17**  
City of London Academy Highgate Hill **18**  
City of London Academy Shoreditch Park **19**  
City of London Freeman's School **20**  
Galleywall Primary City of London Academy **21**  
City of London Academy Highbury Grove **22**  
Newham Collegiate Sixth Form Centre **23**  
Redriff Primary City of London Academy **24**  
The City Academy, Hackney **25**



Ashted Common **26**  
Burnham Beeches **27**  
Cemetery and Crematorium **28**  
Coulsdon Common **29**  
Epping Forest **30**  
Farthing Downs and New Hill **31**  
Hampstead Heath **32**  
Highgate Wood **33**  
Kenley Common **34**  
Queen's Park **35**  
Riddlesdown **36**  
Spring Park **37**  
Stoke Common **38**  
West Ham Park **39**  
West Wickham Common **40**  
London City Airport **41**  
London Gateway **42**  
Sheerness **43**  
Thamesport **44**  
Tilbury **45**  
Denton Office **46**  
Museum of London Docklands **47**

Combined Markets Facility planned for the future 2027/28 at Dagenham Dock

[CoLC international offices operate from New York, Brussels, Mumbai, Beijing and Shanghai.]







**Corporate Strategy & Performance Team**

Town Clerk's Department

City of London Corporation

PO Box 270 | Guildhall | London, EC2P 2EJ

T : +44 (0) 20 7606 3030

